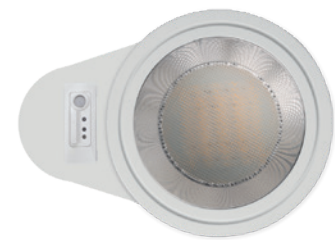




S



M



L



# Prettus Sens

Round modern and functional downlight with sensor

### Product description

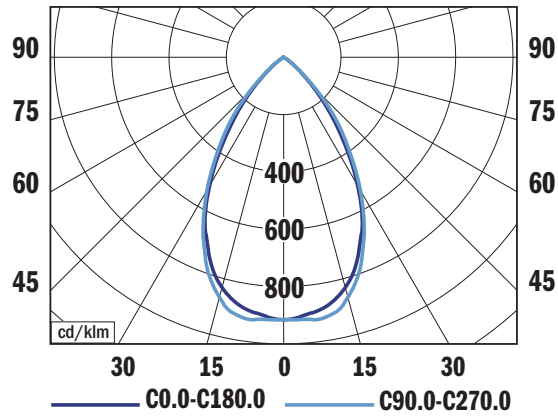
We bring downlight Prettus with the EasyAir sensor for intelligent control. It is a series of modern and functional downlights in three dimensions, characterized by a wide range of features and options, making it ideal for different interiors. This integrated solution combines occupancy and daylight sensing, enabling per-luminaire control for energy efficiency. EasyAir simplifies installation and configuration through the user-friendly Philips MasterConnect App.

### Technical features:

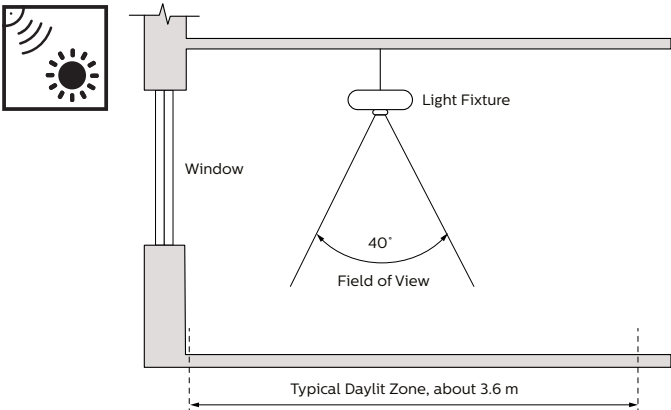
- Mounting: ceiling recessed
- Optical system: polished reflector (PRE), matt reflector (MRE), polished reflector + cover (PRT), matt reflector + cover (MRT)
- Beam angle: 65° (S, L), 70° (M)
- Housing: sheet steel
- Diffuser: microprismatic PMMA
- Trim: die-cast aluminium
- Reflector: anodised aluminium
- Cover: transparent PMMA, on request opal PMMA
- Chromacity: 3-step MacAdam
- Colour rendering index: min. 80, on request min. 90
- Colour temperature: 3000K, 4000K
- Electronic control gear: FIX (ECG), DALI (EDA), on request Emergency unit variant

TYPE	NET LUMEN OUTPUT (at Ta = 25 °C) (lm)	POWER CONSUMPTION (W)	SYSTEM EFFICACY (lm/W)	CRI	CCT (K)
PRETTUS S	1650	15	110	80+	3000
PRETTUS S	1750	15	117	80+	4000
PRETTUS S	2150	19	113	80+	3000
PRETTUS S	2250	19	118	80+	4000
PRETTUS M	2150	19	113	80+	3000
PRETTUS M	2250	19	118	80+	4000
PRETTUS M	2750	24	115	80+	3000
PRETTUS M	2850	24	119	80+	4000
PRETTUS L	3250	29	112	80+	3000
PRETTUS L	3400	29	117	80+	4000
PRETTUS L	3800	33	115	80+	3000
PRETTUS L	4000	33	121	80+	4000

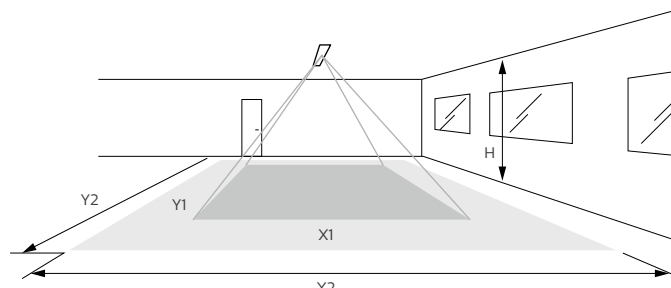
### Photometry



PRETTUS S PRE, 1750 lm 4000 K  
LOR = 100%  
lower flux fraction 100%  
upper flux fraction 0%  
UGR < 19



H (m)	Y1 (m)	X1 (m)	Y2 (m)	X2 (m)
2.4	2.9	2.7	4.5	2.9
3	3.6	3.4	5.4	3.5



- Sensor: EasyAir SNS200
- Service lifetime (Ta 25°C): 100,000 hours/L90/B20
- Ambient temperature: Ta = -20°C...+35°C
- Degree of protection: IP20, optical part IP40 or IP54
- Dimmensions:  
S ø166 x 113 mm  
M ø216 x 116 mm  
L ø266 x 139 mm
- Cutout:  
S ø154 mm  
M ø204 mm  
L ø254 mm

220-240V  
50-60Hz

LED

CHROMATICITY  
3  
SDCM

CRI  
80+  
Ra

CCT  
3000  
K

CCT  
4000  
K

ECG

EDA  
DALI

IP  
20

IP  
40

IP  
54